

Material
Data Sheet



EOS NickelAlloy IN625

Nickel Alloy for Various Applications in Cryogenic to Elevated Temperatures

EOS NickelAlloy IN625

High Strength and Corrosion Resistance in Cryogenic to Elevated Temperatures

EOS NickelAlloy IN625 is a solid solution strengthened nickel-chromium-molybdenum-niobium alloy used for diverse applications requiring high strength as well as corrosion and/or oxidation resistance.

EOS NickelAlloy IN625 is a nickel alloy powder intended for manufacturing parts on EOS metal systems with EOS DMLS processes.

Main Characteristics:

- Combination of high strength and ductility at ambient and elevated temperatures
- Good corrosion resistance in a variety of environments
- Oxidation resistance
- Good fabricability

Typical Applications:

- Various applications, from cryogenic to elevated temperatures
- Parts for chemical processing
- Gas turbine components
- Parts in sea water service
- High performance automotive engine parts

The EOS Quality Triangle

EOS uses an approach that is unique in the AM industry, taking each of the three central technical elements of the production process into account: the system, the material and the process. The data resulting from each combination is assigned a Technology Readiness Level (TRL) which makes the expected performance and production capability of the solution transparent.

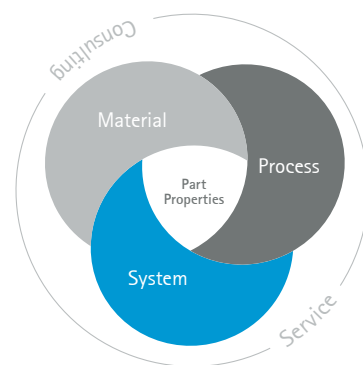
EOS incorporates these TRLs into the following two categories:

- Premium products (TRL 7-9): offer

highly validated data, proven capability and reproducible part properties.

- Core products (TRL 3 and 5): enable early customer access to newest technology still under development and are therefore less mature with less data.

All of the data stated in this material data sheet is produced according to EOS Quality Management System and international standards.



Powder Properties

Powder and built part compositions meet the chemical composition requirements of UNS N06625, AMS 7000, AMS 7001, ASTM F3055, W.Nr 2.4856, and DIN NiCr22Mo9Nb.

Powder chemical composition (wt.-%)

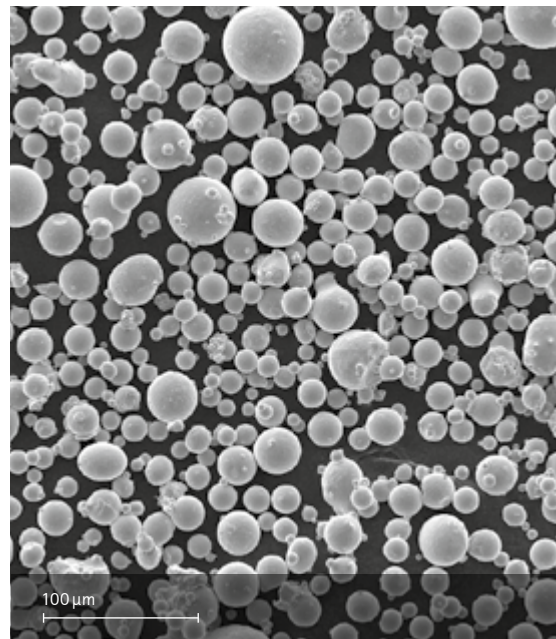
Element	Min.	Max.
Cr	20.00	23.00
Mo	8.00	10.00
Nb	3.15	4.15
Fe	-	5.00
Ti	-	0.40
Al	-	0.40
Co	-	1.00
Si	-	0.50
Mn	-	0.50
C	-	0.10
Ta	-	0.05
P	-	0.015
S	-	0.015
Ni	Bal	Bal

Powder particle size

Generic particle size distribution

15-60 μm

SEM picture of EOS NickelAlloy IN625 powder.

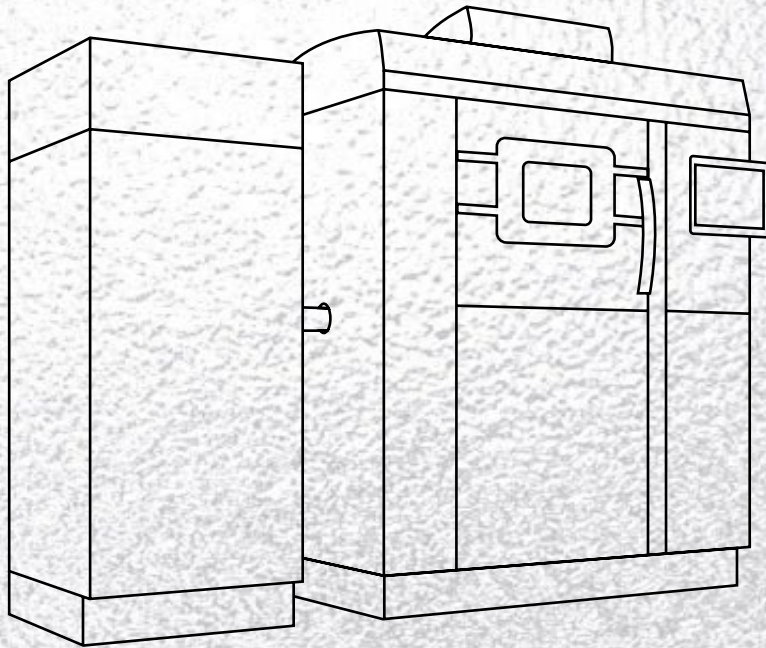


Heat Treatment

EOS NickelAlloy IN625 can be used for many applications in the stress relieved condition, which is typically performed at 870 °C (1 600 °F). Note that this heat treatment does not solutionise the alloy.

Step 1:

Stress relieve at 870 °C (1 600 °F) for 1 hour followed by rapid cooling.



EOS NickelAlloy IN625 for EOS M 290 | 40 μm

Process Information

Physical Part Properties

Mechanical Properties

Additional Data

EOS NickelAlloy IN625 for EOS M 290 | 40 µm

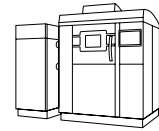
Process Information

System set-up		EOS M 290
EOSPAR name	IN625_Performance M291 2.00	
Software requirements	EOSPRINT 2.5 or newer EOSYSTEM 2.5 or newer	
Powder part no.	9011-0022	
Recoater blade	EOS HSS Blade	
Nozzle	EOS Grid Nozzle	
Inert gas	Argon	
Sieve	63 µm	

Additional information

Layer thickness	40 µm
Volume rate	4.2 mm ³ /s

Chemical and Physical Properties of Parts¹



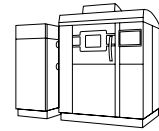
*Micrograph of polished surface.
Heat treated.*

Defects	Result
Average defect percentage	0.011 %

Modulus of Elasticity

EN ISO 6892-1 Method A, Range 1 (0.00007 1/s)

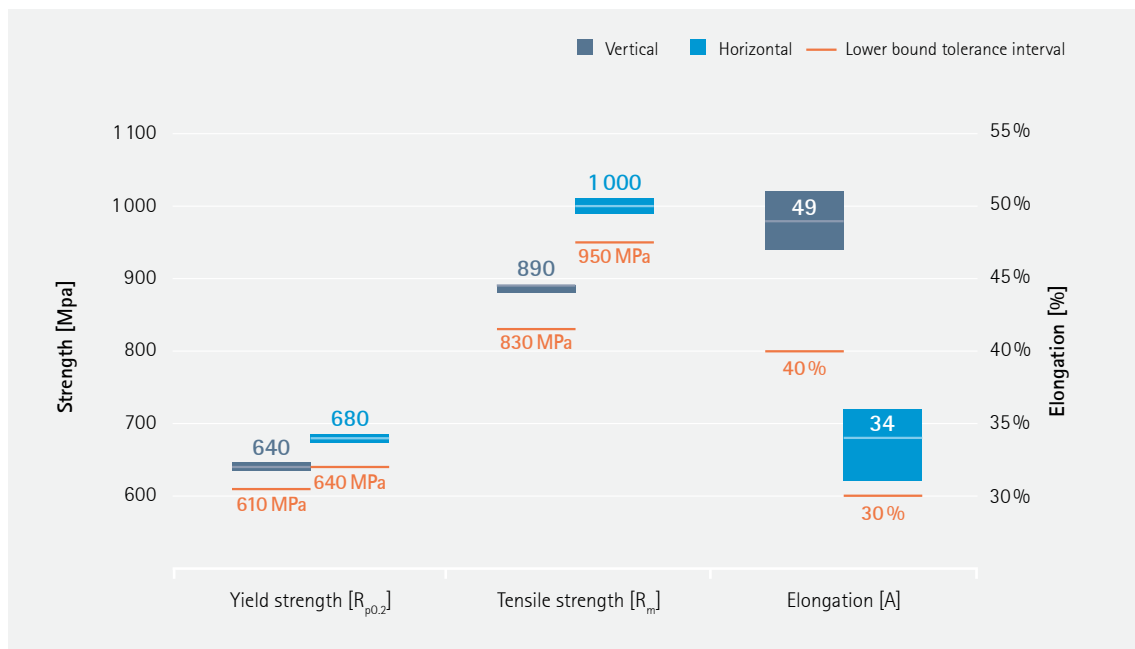
State	Heat treated
Vertical [GPa]	204
Horizontal [GPa]	214



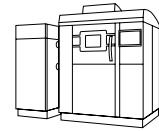
Mechanical Properties

Tensile properties heat treated
according to ISO 6892-1, $L_0 = 4 \cdot d_0$

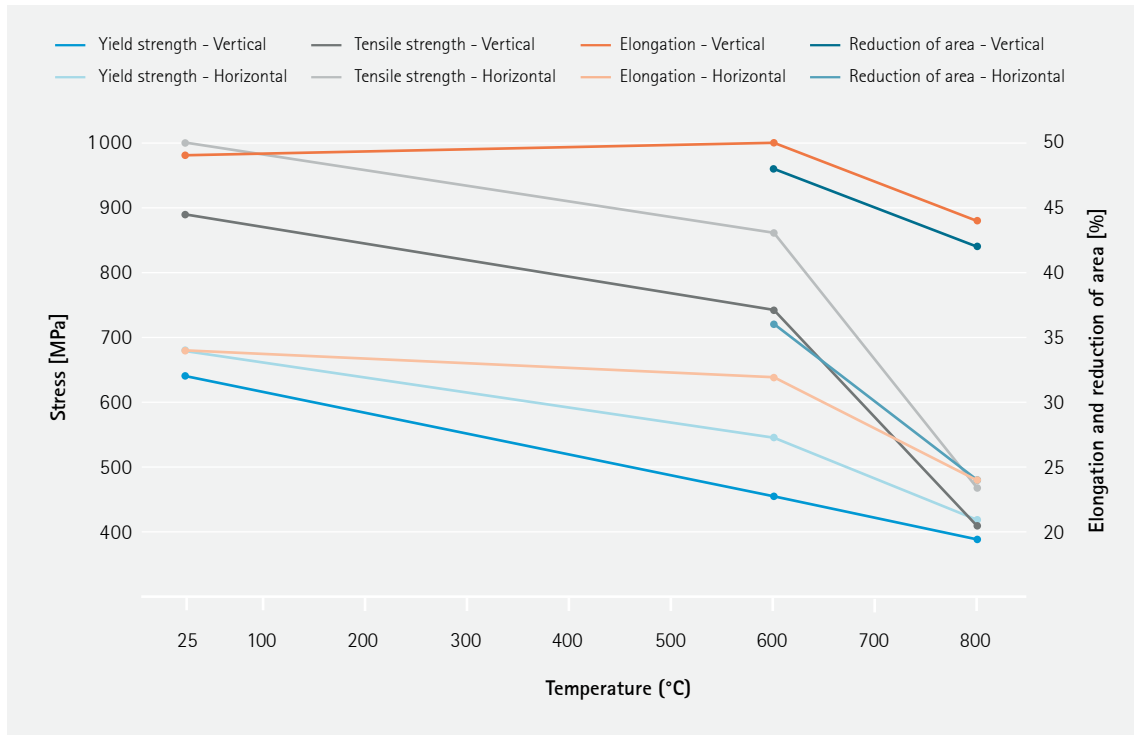
	Yield strength $R_{p0.2}$ [MPa]	Tensile strength R_m [MPa]	Elongation at break A [%]
Vertical	640	890	49
Horizontal	680	1000	34



Tolerance intervals provide lower bounds where 90 % of the population falls with 95 % confidence.
Tolerance intervals are based on validation data / QA statistics. Heat treated state.



Tensile Properties at Elevated Temperatures



Elevated temperature tensile properties in heat-treated condition. Testing according to ISO 6892-1, $L_0 = 4 \cdot d_0$.

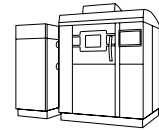
Tensile properties as manufactured according to ISO 6892-1, $L_0 = 4 \cdot d_0$

	Yield strength $R_{p0.2}$ [MPa]	Tensile strength R_m [MPa]	Elongation at break A [%]
Vertical	630	870	48
Horizontal	720	980	33

Hardness as per ISO 6508

Hardness, HRC	27
---------------	----

Additional Data¹



Stress Rupture Performance

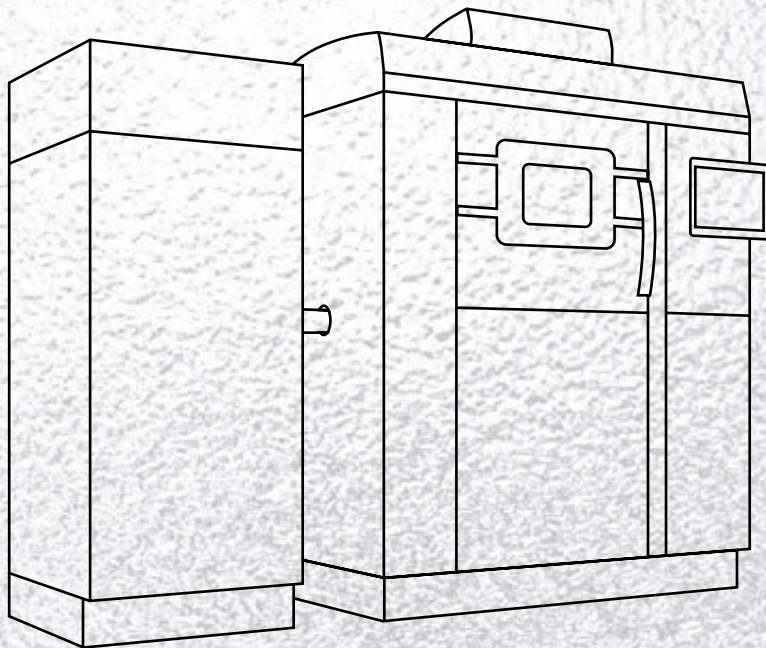
Sample condition: heat treated

ASTM E139, $L_0 = 4 \cdot d_0$

	Stress [MPa]	Temperature [°C]	Time to rupture [h]	Elongation [%]	RA [%]
Vertical	131	816	231	6.5	4.5
Horizontal	131	816	132	6.5	5

Surface Roughness

Horizontal surface	Ra 1-5 μm
Vertical surface	RA 1-5 μm



EOS NickelAlloy IN625 for EOS M 290 | 40 μm HiPro

Process Information
Physical Part Properties
Mechanical Properties
Additional Data

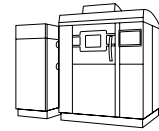
EOS NickelAlloy IN625 for EOS M 290 | 40 µm HiPro Process Information

Basic 40 µm exposure set for building parts with good mechanical performance and higher productivity than IN625_040_PerformanceM291_200.

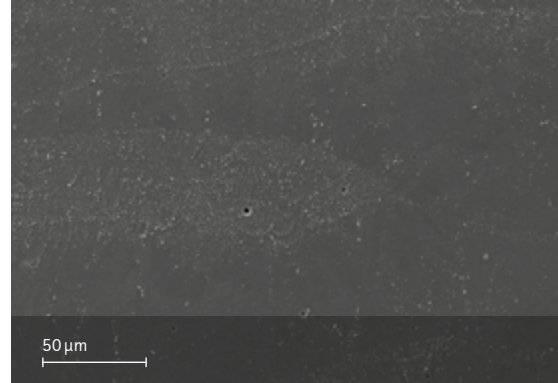


System set-up	EOS M 290
EOSPAR name	IN625_040_080_HiProM291_1xx
Software requirements	EOSPRINT 2.14 or newer EOSYSTEM 2.18 or newer
Powder part no.	9011-0022
Recoater blade	EOS HSS Blade
Nozzle	EOS Grid Nozzle
Inert gas	Argon
Sieve	63 µm

Additional information	
Layer thickness	40 µm
Volume rate	5.7 mm ³ /s



Chemical and Physical Properties of Parts¹



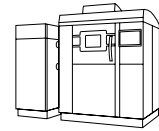
*Etched microstructure and SEM.
Heat treated.*

Defects	Result
Average defect percentage	0.05 %

Modulus of Elasticity

EN ISO 6892-1 Method A, Range 1 (0.00007 1/s)

State	Heat treated
Vertical [GPa]	206
Horizontal [GPa]	204



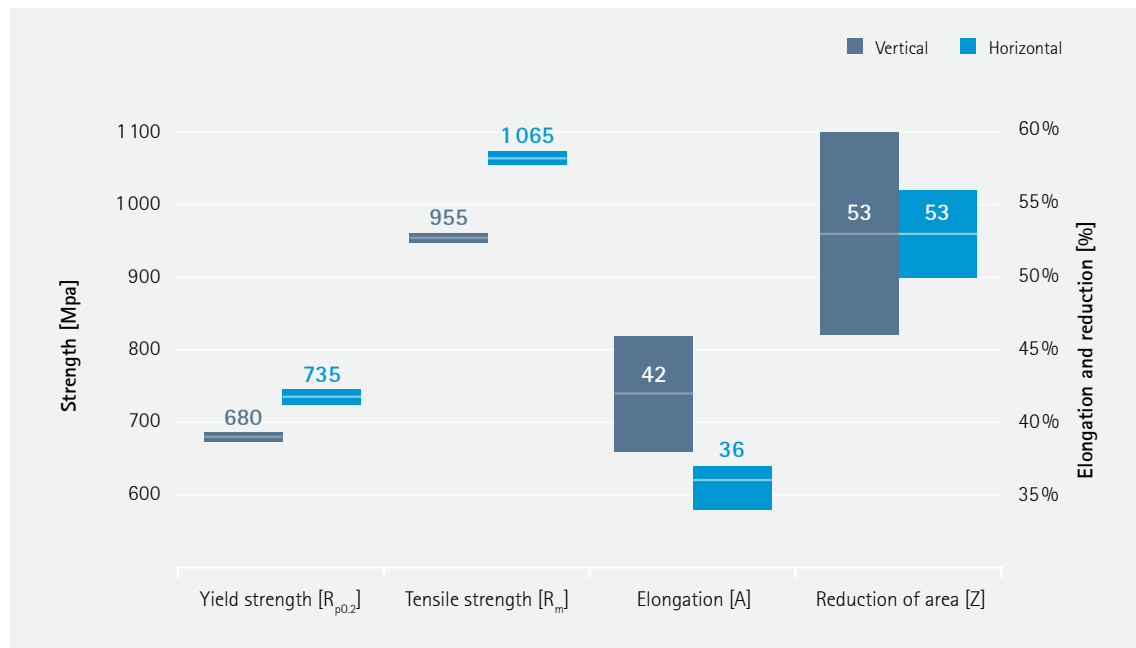
Mechanical Properties¹

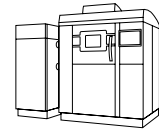
Tensile properties heat treated
according to ISO6892-1, $L_0 = 4 \cdot d_0$

	Yield strength $R_{p0.2}$ [MPa]	Tensile strength R_m [MPa]	Elongation at break A [%]	Reduction of area Z [%]
Vertical	680	955	42	53
Horizontal	735	1065	36	53

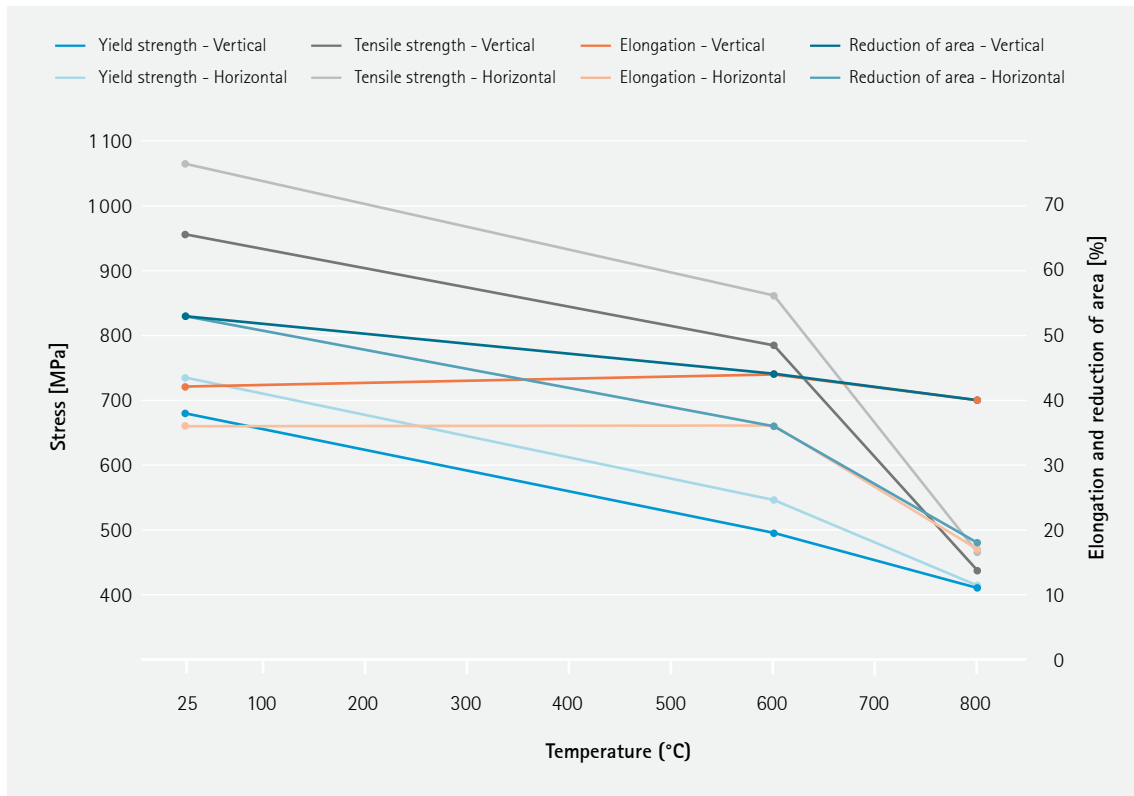
Hardness as per ISO 6508

Hardness, HRC	28
---------------	----





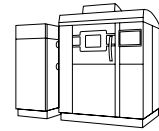
Tensile Properties at Elevated Temperatures



Elevated temperature tensile properties in heat-treated condition. Testing according to ISO 6892-1, $L_0 = 4 \cdot d_0$.

Tensile properties as manufactured
according to ISO 6892-1, $L_0 = 4 \cdot d_0$

	Yield strength $R_{p0.2}$ [MPa]	Tensile strength R_m [MPa]	Elongation at break A [%]	Reduction of area [%]
Vertical	645	900	43	62
Horizontal	750	1020	36	55



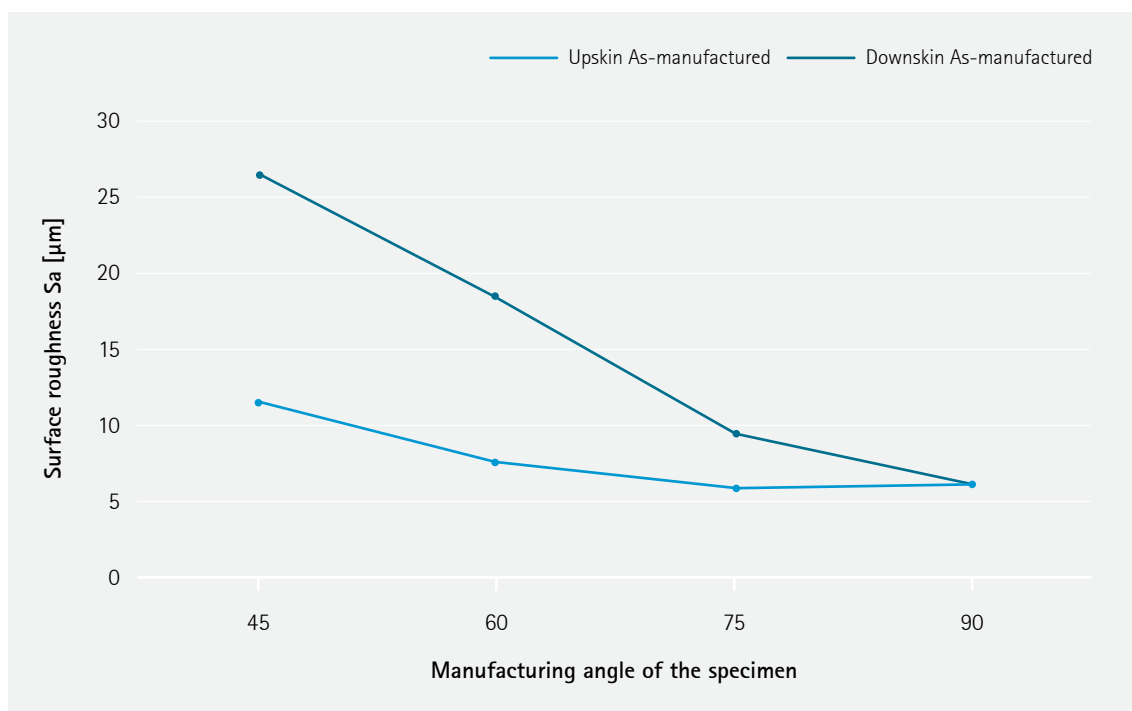
Additional Data¹

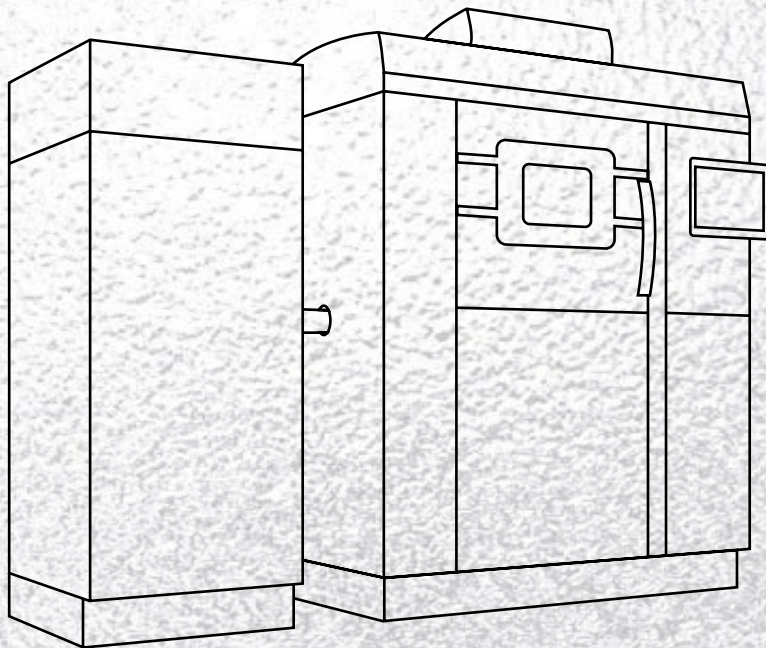
Stress Rupture Performance

Sample condition: heat treated
ASTM E139, $L_0 = 4 \cdot d_0$

	Stress [MPa]	Temperature [°C]	Time to rupture [h]	Elongation [%]	RA [%]
Vertical	131	816	134	9	6,5
Horizontal	131	816	92	11	5

Surface Roughness





EOS NickelAlloy IN625 for EOS M 290 | 80 μm HiPro

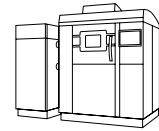
Process Information
Physical Part Properties
Mechanical Properties
Additional Data

EOS NickelAlloy IN625 for EOS M 290 | 80µm HiPro Process Information

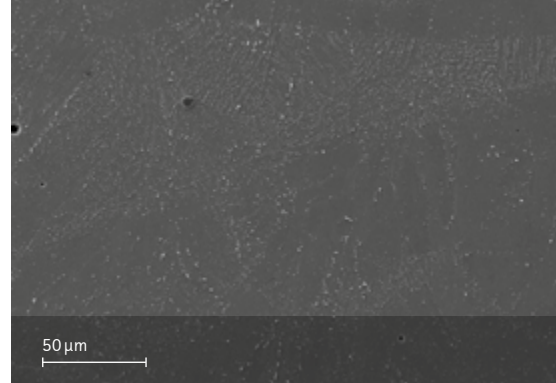
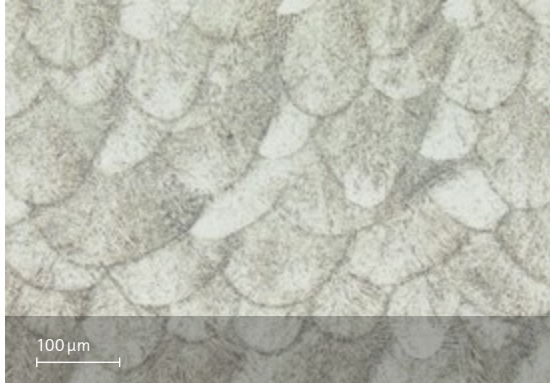
System set-up		EOS M 290
EOSPAR name	IN625_040_080_HiProM291_1xx	
Software requirements	EOSPRINT 2.14 or newer EOSYSTEM 2.18 or newer	
Powder part no.	9011-0022	
Recoater blade	EOS HSS Blade	
Nozzle	EOS Grid Nozzle	
Inert gas	Argon	
Sieve	63 µm	

Additional information

Layer thickness	80 µm
Volume rate	9.2 mm ³ /s



Chemical and Physical Properties of Parts¹



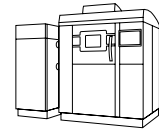
*Etched microstructure and SEM.
Heat treated.*

Defects	Result
Average defect percentage	0.03 %

Modulus of Elasticity

EN ISO 6892-1 Method A, Range 1 (0.00007 1/s)

State	Heat treated
Vertical [GPa]	212
Horizontal [GPa]	200



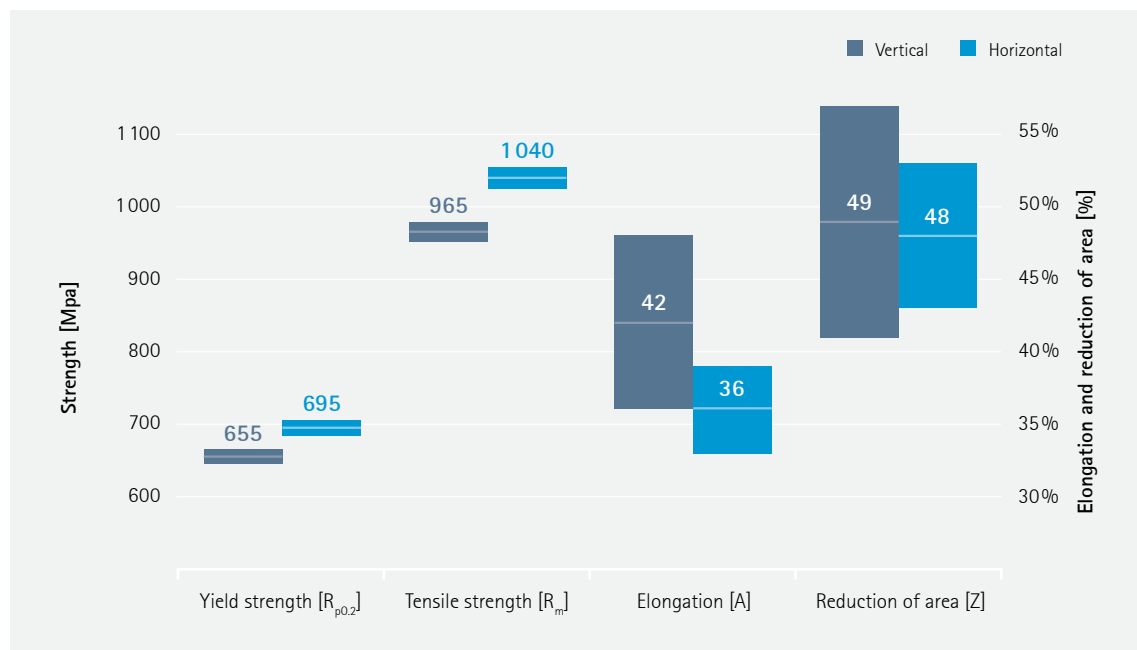
Mechanical Properties¹

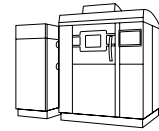
Tensile properties heat treated
according to ISO6892-1, $L_0 = 4 \cdot d_0$

	Yield strength $R_{p0.2}$ [MPa]	Tensile strength R_m [MPa]	Elongation at break A [%]	Reduction of area Z [%]
Vertical	655	965	42	49
Horizontal	695	1040	36	48

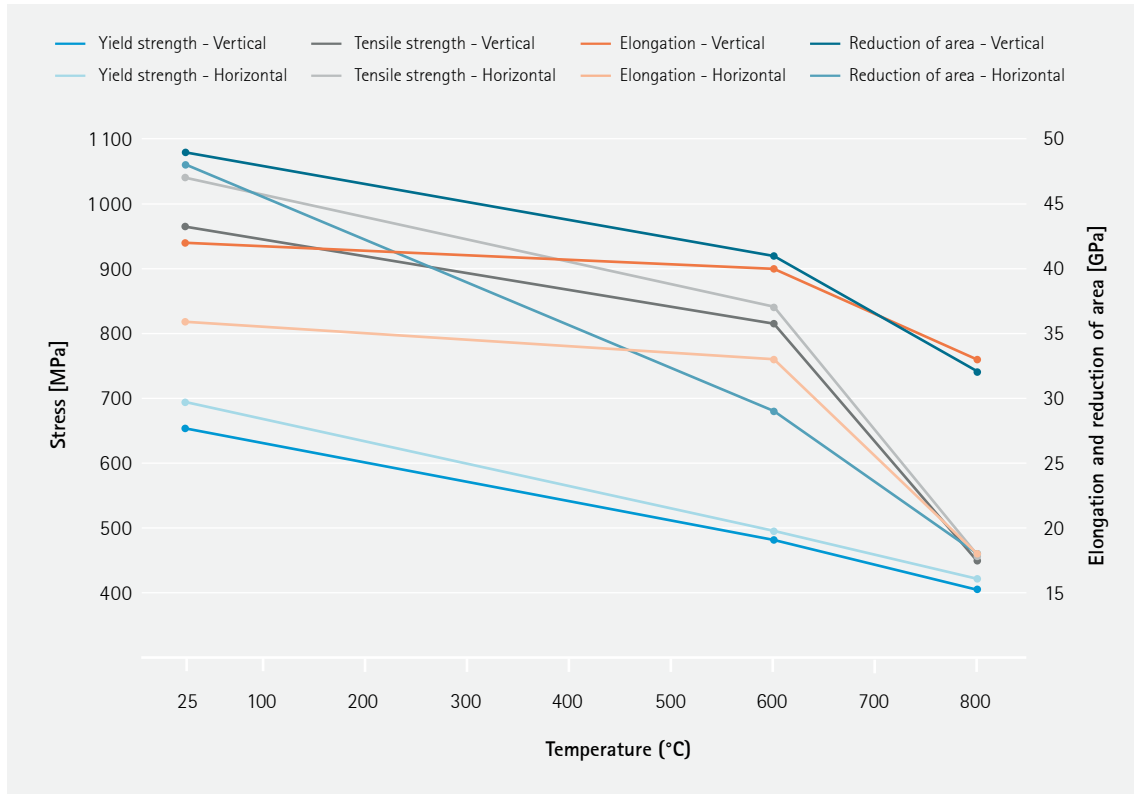
Hardness as per ISO 6508

Hardness, HRC	27
---------------	----





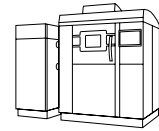
Tensile Properties at Elevated Temperatures



Elevated temperature tensile properties in heat-treated condition. Testing according to ISO 6892-1, $L_0 = 4 \cdot d_0$.

Tensile properties as manufactured
according to ISO 6892-1, $L_0 = 4 \cdot d_0$

	Yield strength $R_{p0.2}$ [MPa]	Tensile strength R_m [MPa]	Elongation at break A [%]	Reduction of area [%]
Vertical	645	940	44	63
Horizontal	720	995	39	56



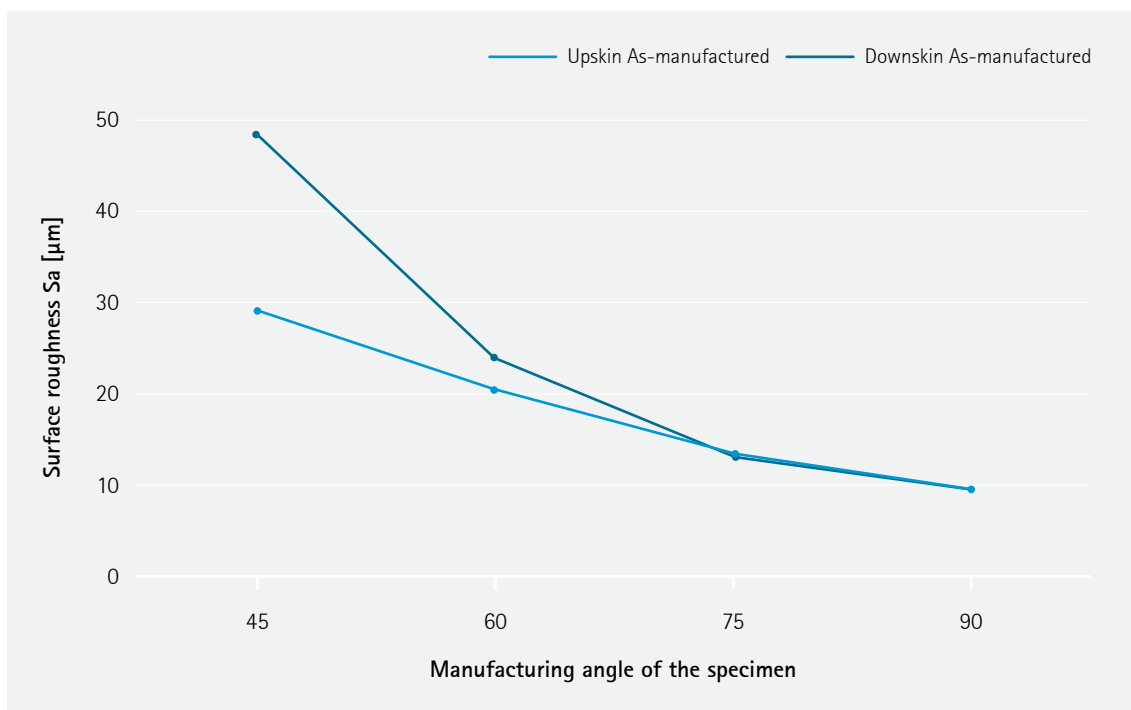
Additional Data¹

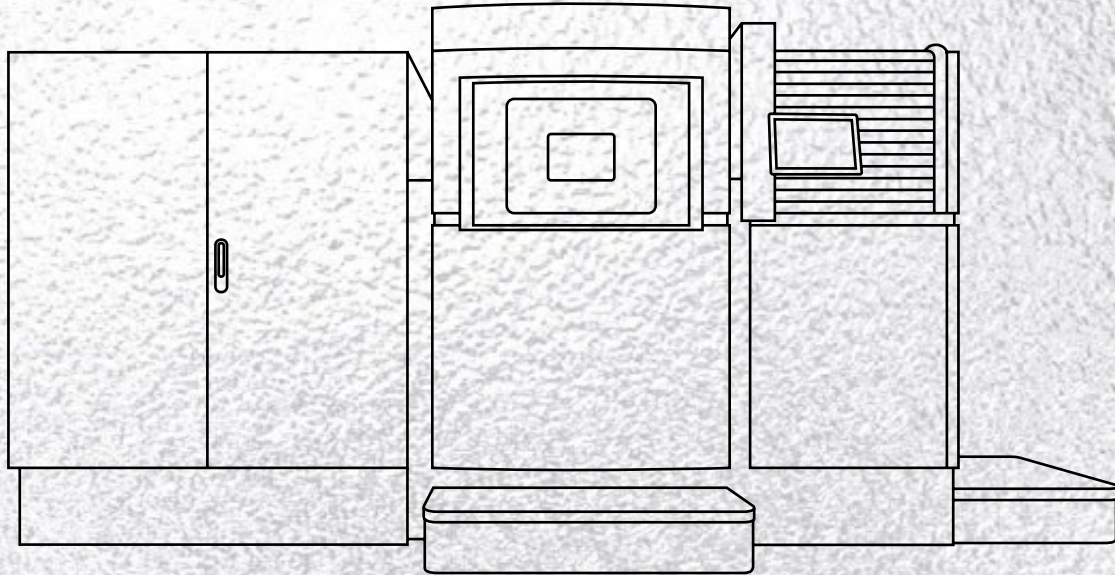
Stress Rupture Performance

Sample condition: heat treated
ASTM E139, $L_0 = 4 \cdot d_0$

	Stress [MPa]	Temperature [°C]	Time to rupture [h]	Elongation [%]	RA [%]
Vertical	131	816	54	9	6
Horizontal	131	816	28	9,5	7,5

Surface Roughness





EOS NickelAlloy IN625 for EOS M 400-4 | 40 μm HiPro

- Process Information
- Physical Part Properties
- Mechanical Properties
- Additional Data

EOS NickelAlloy IN625 for EOS M 400-4 | 40 µm HiPro Process Information

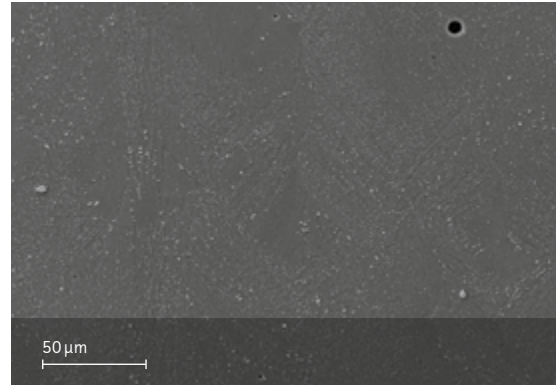
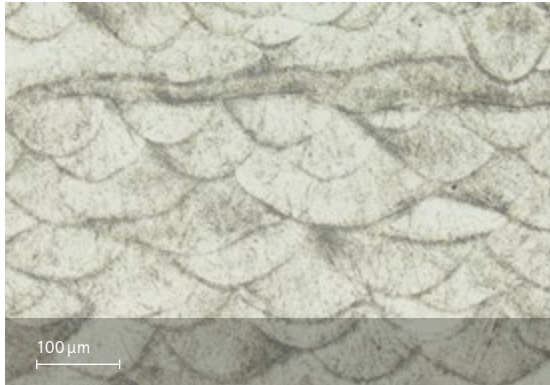
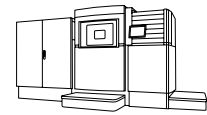
This process parameter includes two variations of the exposure set: the first one provides better productivity while the second one enables low angle buildability down to 20° at least¹. The low angle buildability can be optimized further through the part geometry and the length of overhang.



System set-up	EOS M 400-4
EOSPAR name	IN625_040_080_HiProM404_1xx
Software requirements	EOSPRINT 2.14 or newer EOSYSTEM 2.18 or newer
Powder part no.	9011-0022
Recoater blade	EOS HSS Blade
Nozzle	Aerospike V2
Inert gas	Argon
Sieve	63 µm

Additional information	
Layer thickness	40 µm
Volume rate	4 x 5.7 mm ³ /s

Chemical and Physical Properties of Parts¹



*Etched microstructure and SEM.
Heat treated.*

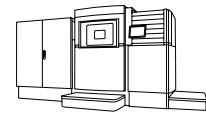
Defects	Result
Average defect percentage	0.04 %

Modulus of Elasticity

EN ISO 6892-1 Method A, Range 1 (0.00007 1/s)

State	Heat treated
Vertical [GPa]	201
Horizontal [GPa]	213

Mechanical Properties¹

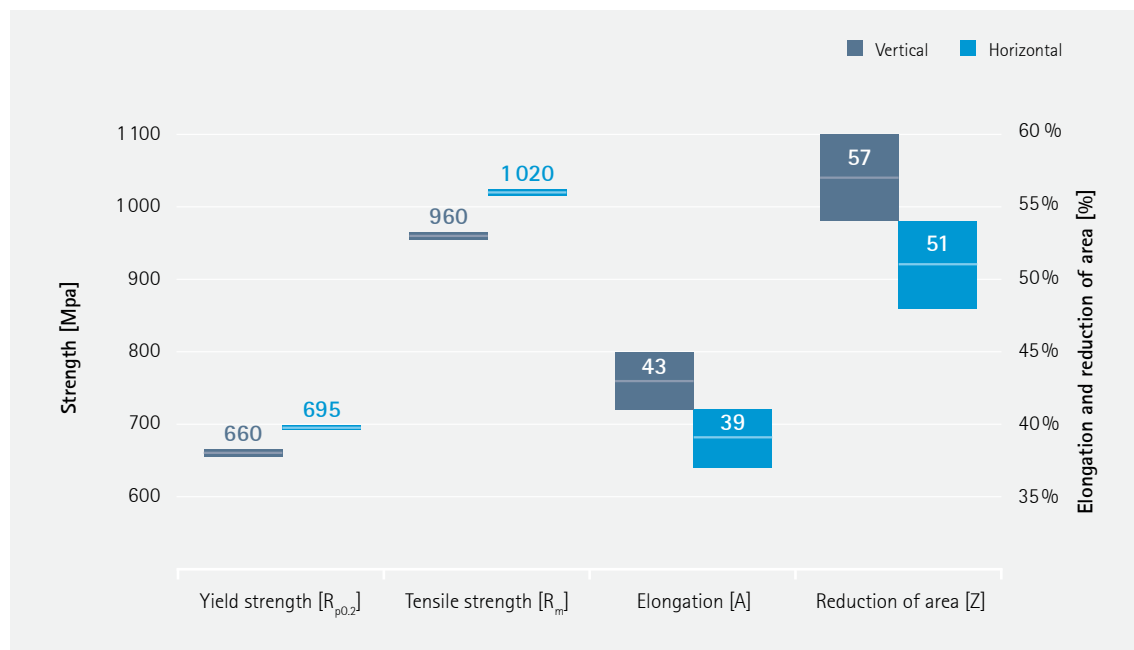


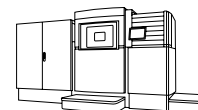
Tensile properties heat treated
according to ISO6892-1, $L_0 = 4 \cdot d_0$

	Yield strength $R_{p0.2}$ [MPa]	Tensile strength R_m [MPa]	Elongation at break A [%]	Reduction of area Z [%]
Vertical	660	960	43	57
Horizontal	695	1020	39	51

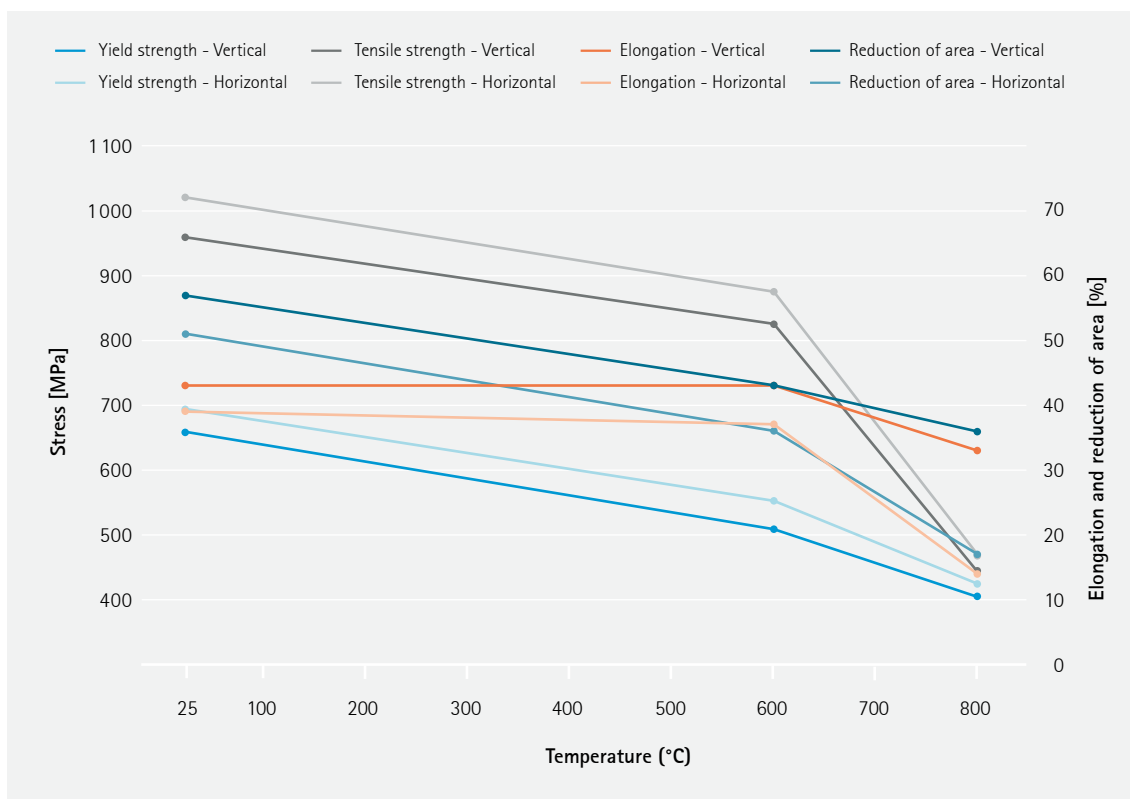
Hardness as per ISO 6508

Hardness, HRC	26
---------------	----





Tensile Properties at Elevated Temperatures

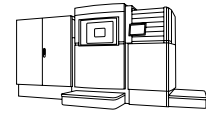


Elevated temperature tensile properties in heat-treated condition. Testing according to ISO 6892-1, $L_0 = 4 \cdot d_0$.

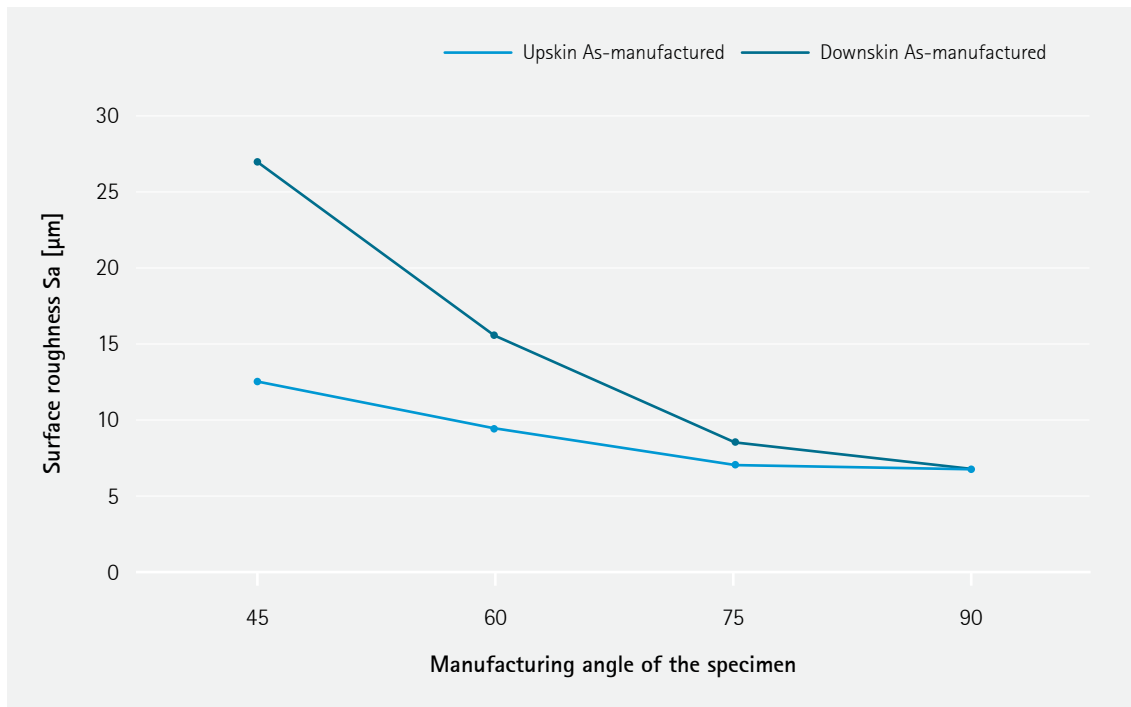
Tensile properties as manufactured
according to ISO 6892-1, $L_0 = 4 \cdot d_0$

	Yield strength $R_{p0.2}$ [MPa]	Tensile strength R_m [MPa]	Elongation at break A [%]	Reduction of area [%]
Vertical	655	945	40	55
Horizontal	760	1030	34	46

Additional Data¹



Surface Roughness

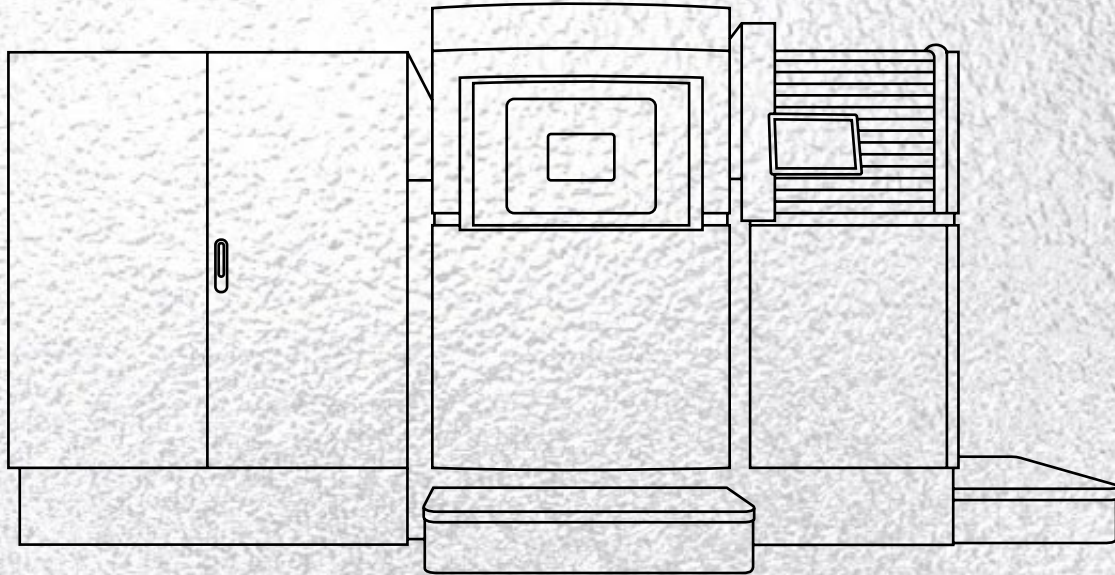


Creep Performance According to ASTM E139, $L_0 = 4 \cdot d_0$

Sample condition: heat treated

ASTM E139, $L_0 = 4 \cdot d_0$

	Stress [MPa]	Temperature [°C]	Time to rupture [h]	Elongation [%]	RA [%]
Vertical	131	816	134	9	6.5
Horizontal	131	816	92	11	5



EOS NickelAlloy IN625 for EOS M 400-4 | 80 μm HiPro

Process Information
Physical Part Properties
Mechanical Properties
Additional Data

EOS NickelAlloy IN625 for EOS M 400-4 | 80 µm HiPro Process Information

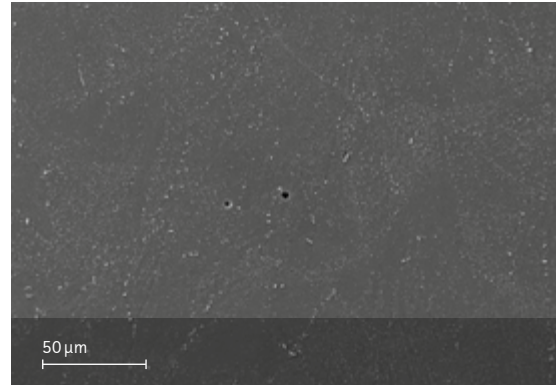
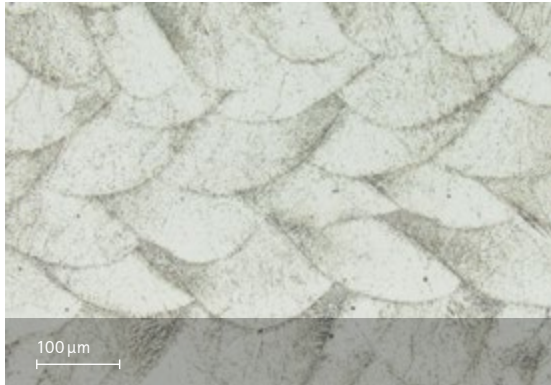
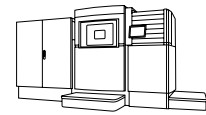
This process provides high productivity with a volume rate that is 61 % faster than IN625 40 µm HiPro process.

System set-up	EOS M 400-4
EOSPAR name	IN625_040_080_HiProM404_1xx
Software requirements	EOSPRINT 2.14 or newer EOSYSTEM 2.18 or newer
Powder part no.	9011-0022
Recoater blade	EOS HSS Blade
Nozzle	Aerospike V2
Inert gas	Argon
Sieve	63 µm

Additional information

Layer thickness	80 µm
Volume rate	up to 4 x 9.2 mm ³ /s

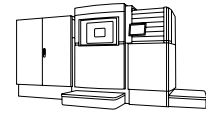
Chemical and Physical Properties of Parts¹



*Etched microstructure and SEM.
Heat treated.*

Defects	Result
Average defect percentage	0.02 %

Mechanical Properties¹

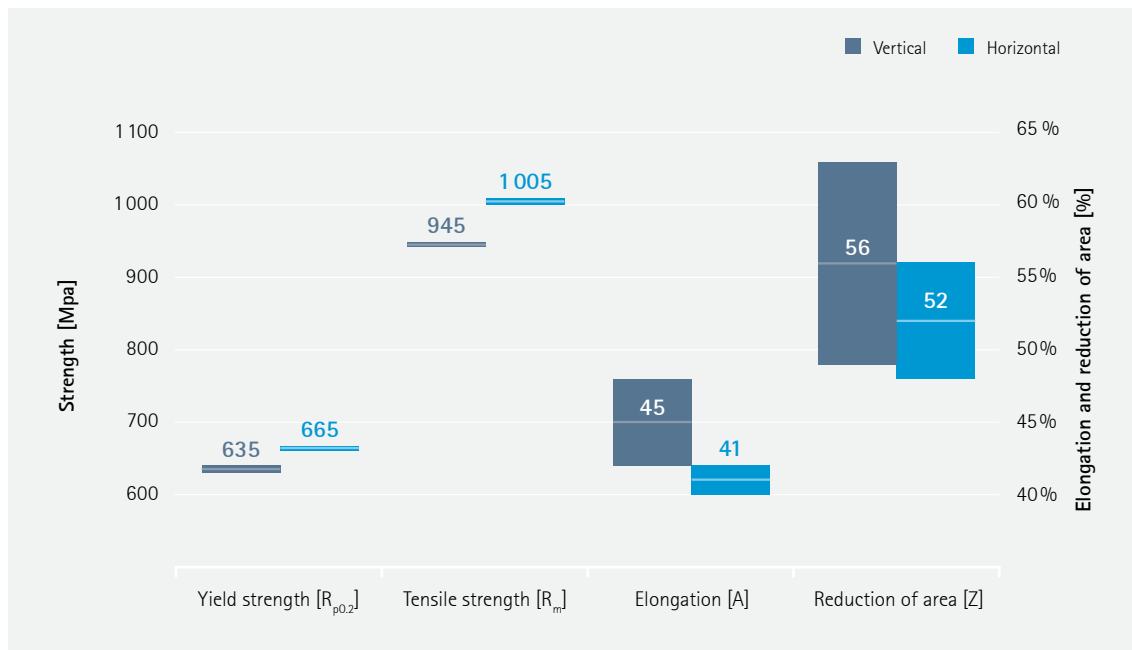


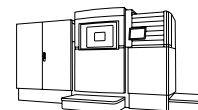
Tensile properties heat treated
according to ISO6892-1, $L_0 = 4 \cdot d_0$

	Yield strength $R_{p0.2}$ [MPa]	Tensile strength R_m [MPa]	Elongation at break A [%]	Reduction of area Z [%]
Vertical	635	945	45	56
Horizontal	665	1005	41	52

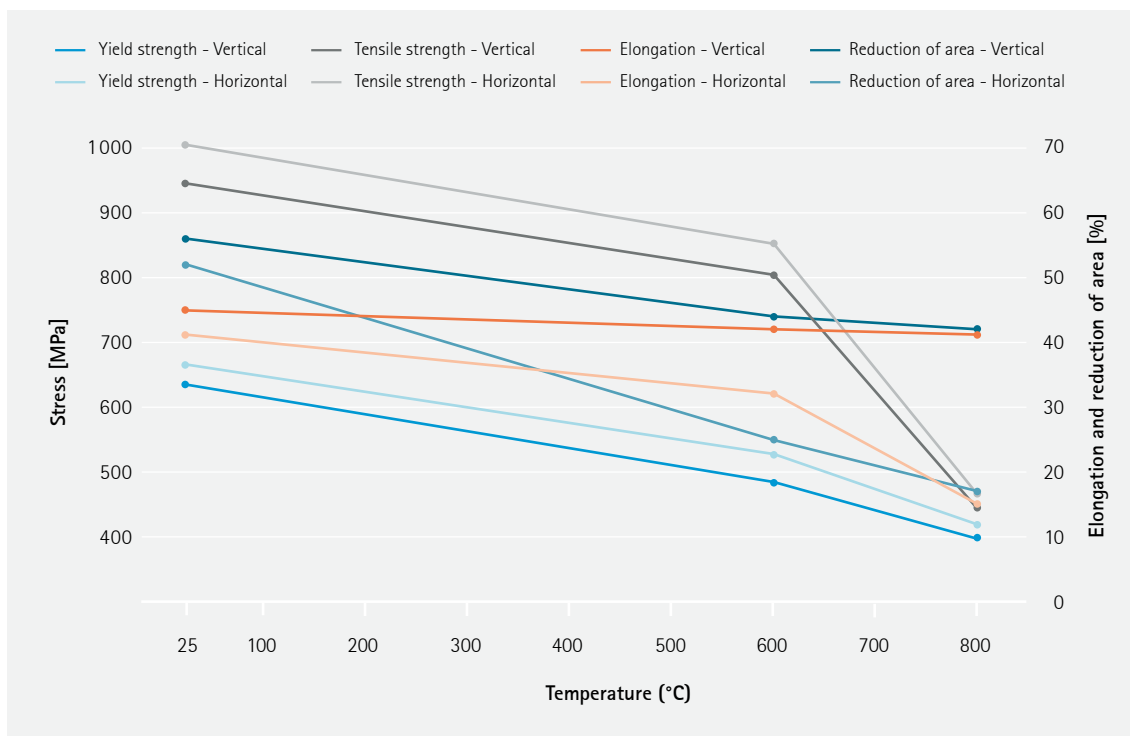
Hardness as per ISO 6508

Hardness, HRC	27
---------------	----





Tensile Properties at Elevated Temperatures

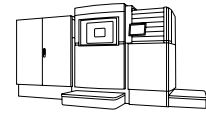


Elevated temperature tensile properties in heat-treated condition. Testing according to ISO 6892-1, $L_0 = 4 \cdot d_0$.

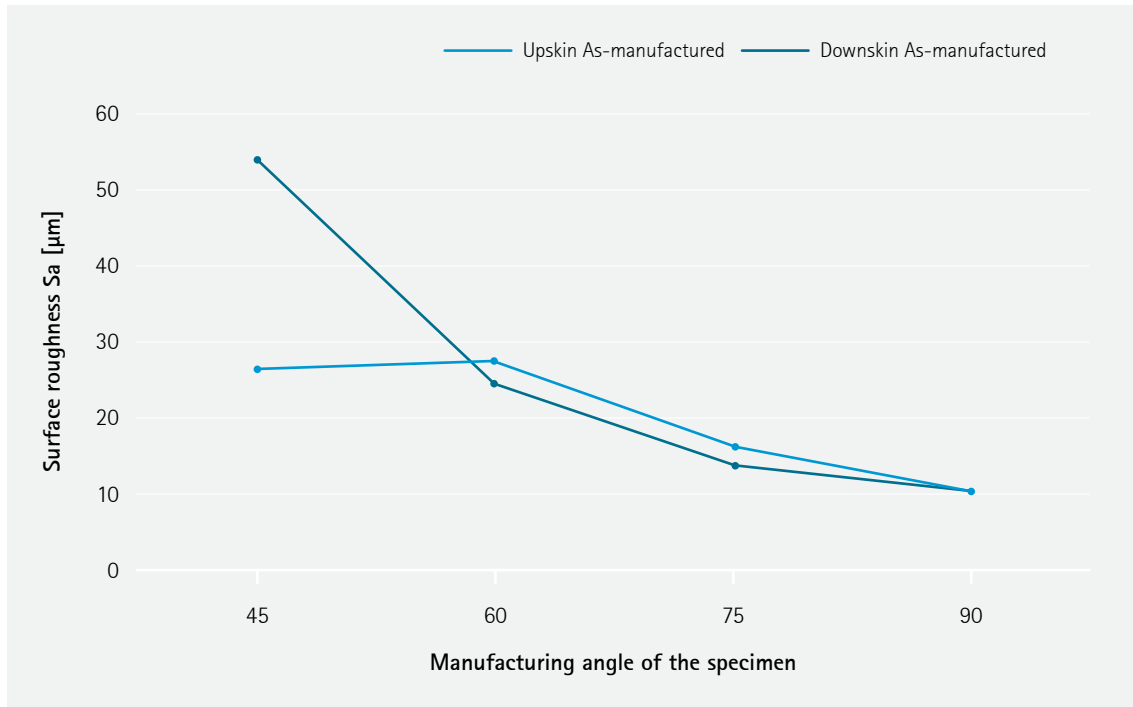
Tensile properties as manufactured
according to ISO 6892-1, $L_0 = 4 \cdot d_0$

	Yield strength $R_{p0.2}$ [MPa]	Tensile strength R_m [MPa]	Elongation at break A [%]	Reduction of Area [%]
Vertical	630	930	45	60
Horizontal	715	1005	37	48

Additional Data¹



Surface Roughness



Creep Performance According to ASTM E139, $L_0 = 4 \cdot d_0$

Sample condition: heat treated

ASTM E139, $L_0 = 4 \cdot d_0$

	Stress [MPa]	Temperature [°C]	Time to rupture [h]	Elongation [%]	RA [%]
Vertical	131	816	105	8	6.5
Horizontal	131	816	63	12.5	12

Headquarters

EOS GmbH
Electro Optical Systems
Robert-Stirling-Ring 1
D-82152 Krailling/Munich
Germany
Phone +49 89 893 36-0
info@eos.info

www.eos.info

in EOS

✕ EOS3Dprinting

▶ EOS3Dprinting

#responsiblemanufacturing

#futureisadditive

Further Offices

EOS France
Phone +33 437 497 676

EOS Greater China
Phone +86 21 602 307 00

EOS India
Phone +91 443 964 8000

EOS Italy
Phone +39 023 340 1659

EOS Japan
Phone +81 45 670 0250

EOS Korea
Phone +82 2 6330 5800

EOS Nordic & Baltic
Phone +46 31 760 4640

EOS of North America
Phone +1 877 388 7916

EOS Singapore
Phone +65 6430 0463

EOS UK
Phone +44 1926 675 110

¹ Part properties are provided for information purposes only and EOS makes no representation or warranty, and disclaims any liability, with respect to actual part properties achieved. Part properties are dependent on a variety of influencing factors and therefore, actual part properties achieved by the user may deviate from the information stated herein.

This document does not on its own represent a sufficient basis for any part design, neither does it provide any agreement or guarantee about the specific properties of a material or part or the suitability of a material or a part for a specific application. **The achievement of certain part properties as well as the assessment of the suitability of this material for a specific purpose is the sole responsibility of the user.**

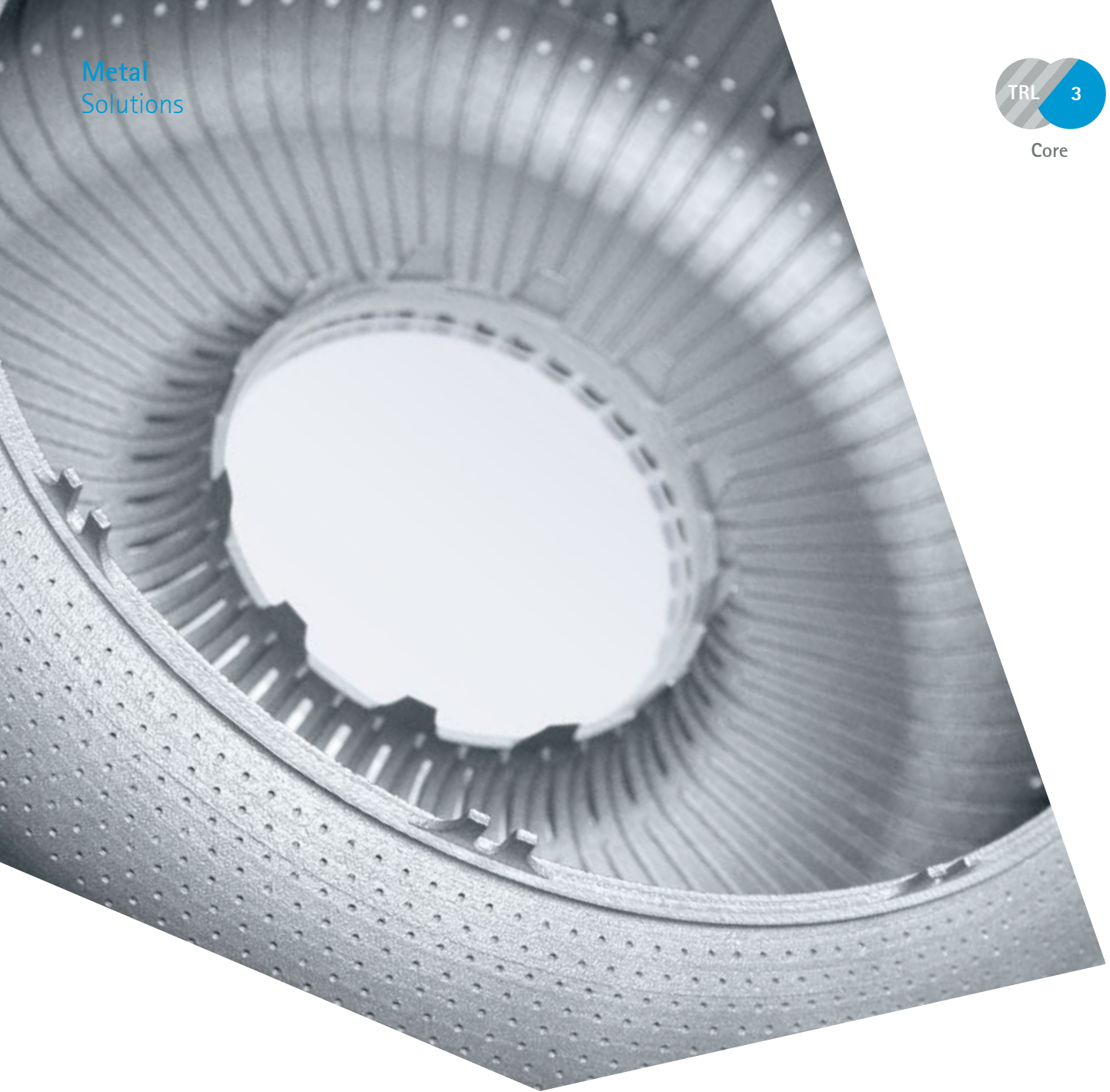
Any information given herein is subject to change without notice.

Status 07/2024

EOS is certified according to ISO 9001. EOS® and EOSPRINT® are registered trademarks of EOS GmbH in some countries. For more information visit www.eos.info/trademarks.

Cover: This image shows a possible application.





EOS NickelAlloy IN625 for EOS M 300-4

EOS NickelAlloy IN625

EOS M 300-4 | 40 μm



EOS NickelAlloy IN625 is a heat and corrosion resistant nickel alloy powder which has been optimized especially for processing on DMLS systems.

Project Partner Materials Solutions, EOS

Main Characteristics

- High tensile, creep and rupture strength
- Heat and corrosion resistant
- Chemical composition corresponding to UNS N06625, AMS 5666F, AMS 5599G, W.Nr 2.4856, DIN NiCr22Mo9Nb.

Typical Applications

- Racing applications
- Gas turbines in aerospace and energy
- Ship building industry

Headquarters

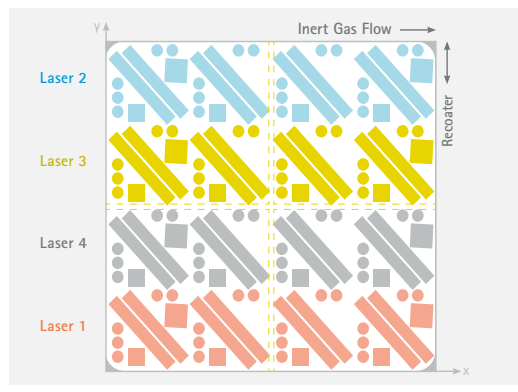
EOS GmbH
Electro Optical Systems
Robert-Stirling-Ring 1
D-82152 Krailling/Munich
Germany
Phone +49 89 893 36-0
info@eos.info

Product Information

DMLS System	EOS M 300-4
Material	EOS NickelAlloy IN625
Process	40 μm layer thickness
Inert Gas	Argon
Recoater blade	HSS, two-sided recoating
Volume rate	up to 4 x 4.2 mm ³ /s

Layout of test job

Part properties based on 2 test jobs each for as manufactured and heat treated data.



www.eos.info

in EOS
EOS GmbH
EOS.global
EOS GmbH
#ShapingFuture
#ResponsibleManufacturing

Further Offices

EOS France
Phone +33 437 497 676

EOS Greater China
Phone +86 21 602 307 00

EOS India
Phone +91 443 964 8000

Typical part properties

	Yield strength $R_{p0.2}$ [MPa]	Tensile strength R_m [MPa]	Elongation at break A [%]	Number of samples
As manufactured vertical	611	852	48.2	160
As manufactured horizontal	750	1030	32.9	64
Heat treated vertical	606	862	52.1	160
Heat treated horizontal	692	1041	35.6	64
Max. pore size	50 μm			64
Porosity	0.006 %			64

Mechanical properties tested according to EN ISO 6892-1 B10. The values in the table are average values and dependent on the thermal load of the job layout as well as the position on the build plate.

Heat treatment procedure: anneal at 870 °C (1600 °F) for 1 hour, rapid cooling

Status 02/2022

EOS is certified according to ISO 9001. EOS®, DMLS® and EOSPRINT® are registered trademarks of EOS GmbH Electro Optical Systems in some countries. For more information visit www.eos.info/trademarks.

Part properties stated above are provided for information purposes only and EOS makes no representation or warranty whatsoever, and disclaims any liability, with respect to actual part properties achieved with this material. Part properties are subject to variation and dependent on factors such as system parameters, process and test geometries. Therefore actual part properties may deviate and users of this material are exclusively responsible to determine its suitability for the intended use. The part properties stated above have been determined by testing this material with above specified type of EOS Laser Powder Bed Fusion system, EOSYSTEM and EOSPRINT software version, parameter set and operation in compliance with parameter sheet and operating instructions. Part properties are measured with specified measurement methods using defined test geometries and procedures. Further details of the test procedures used by EOS are available on request.

Important Note

This data sheet specifies the powder properties of the EOS powder type referenced above. If you purchase powder from EOS, EOS will deliver such powder in conformity with the version of this data sheet prevailing at the time of your order. If you purchase powder from any source other than EOS, EOS makes no warranties or representations with respect to powder properties to you whatsoever, and claims with respect to the quality or properties of EOS powder are available only against the seller of such powder in accordance with your agreement with the seller, not against EOS. EOS data sheets are subject to change without notice. This data sheet does not constitute a warranty or warranty of properties or fitness for a specific purpose and may not be relied upon as such.

EOS Italy
Phone +39 023 340 1659

EOS Japan
Phone +81 45 670 0250

EOS Korea
Phone +82 2 6330 5800

EOS Nordic & Baltic
Phone +46 31 760 4640

EOS North America
Phone +1 877 388 7916

EOS Singapore
Phone +65 6430 0463

EOS UK
Phone +44 1926 675 110

